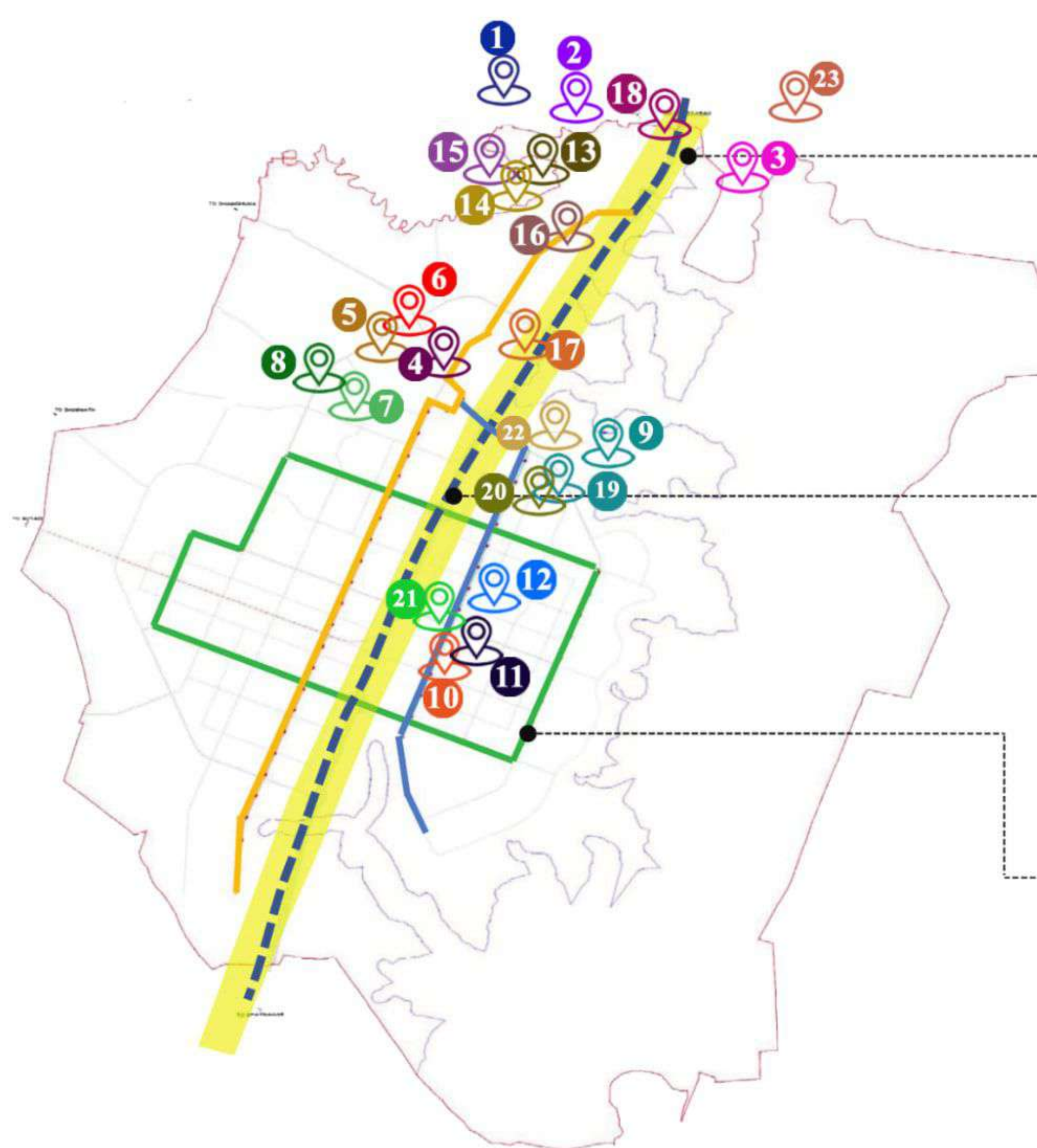


# LOCATION OF SMARTHOMES PROJECTS AROUND LIGHT RAIL { METRO } NETWORK DHOLERA

## Proposed Light Rail Network {Metro} in Dholera

| SMART HOMES PROJECTS |  |   |
|----------------------|--|---|
| 1                    |  | Maple Garden  |
| 2                    |  | Dholera City Square                                   |
| 3                    |  | International Airport City                            |
| 4                    |  | ABCD Enclave I  |
| 5                    |  | ABCD Enclave II                                       |
| 6                    |  | ABCD Enclave III                                      |
| 7                    |  | ABCD Greens I   |
| 8                    |  | ABCD Greens II  |
| 9                    |  | Dholera Central Residency I                           |
| 10                   |  | Orchard Enclave I                                     |
| 11                   |  | Orchard Enclave II                                    |
| 12                   |  | Pinecrest Gardenia                                    |
| 13                   |  | Orange County   |
| 14                   |  | Olive Garden  |
| 15                   |  | Mulberry Park   |
| 16                   |  | Dholera International Plaza                           |
| 17                   |  | Piccadelly Square                                     |
| 18                   |  | Dholera Xpressway<br>Commercial & industrial Park I   |
| 19                   |  | Dholera Xpressway<br>Commercial & industrial Park II  |
| 20                   |  | Dholera Xpressway<br>Commercial & industrial Park III |
| 21                   |  | Orchard Enclave 3                                     |
| 22                   |  | Bheemtalav - Commercial - park -I                     |
| 23                   |  | Navagam Hieghts                                       |



AG  
ABCD Greens~I

TOWN PLANNING 2 (WEST), RESIDENTIAL ZONE  
DHOLERA SIR

A PROJECT BY:  
SMARTHOMES INFRASTRUCTURE PVT. LTD.



SmartHomes Infrastructure Pvt. Ltd.

1205 Ganesh Glory, Near BSNL Office, Jagatpur Chenpur Road, SG Highway Jagatpur, Ahmedabad - 382481 Gujarat, India

+91 7096961241 - 50 | www.smart-homes.in | info@smart-homes.in





**Survey No. 1351 | Village: Bhadiyad | Taluka: Dholera | District: Ahmedabad | Total Area: 9,028 Sq Meters Approx.**  
**Total No. of Plots: 14 | 2 Common Plots | Compound Wall and an entrance Gate | Proper demarcation between plots**  
**Internal Roads | Tree Plantation and Street Light**





## LOCATION ADVANTAGE

ABCD Greens I, Inside TP 2, Dholera SIR

- ✓ 2 minutes from ABCD Building, Dholera SIR.
- ✓ 2 minutes from Dholera City Center.
- ✓ 2 minutes from Public Facilities.
- ✓ 2 minutes from Knowledge & IT Zone.
- ✓ 2 minutes from Industrial Zone.
- ✓ 3 minutes from Activation Area.
- ✓ 2 minutes from 250 meter wide expressway connecting Ahmedabad - Dholera - Bhavnagar.
- ✓ 2 minutes from Metro Station.
- ✓ 2 minutes from Green Zone

"Three things that matter in property: Location, Location, Location".  
Investing in ABCD Greens I means you are getting all the three!!!



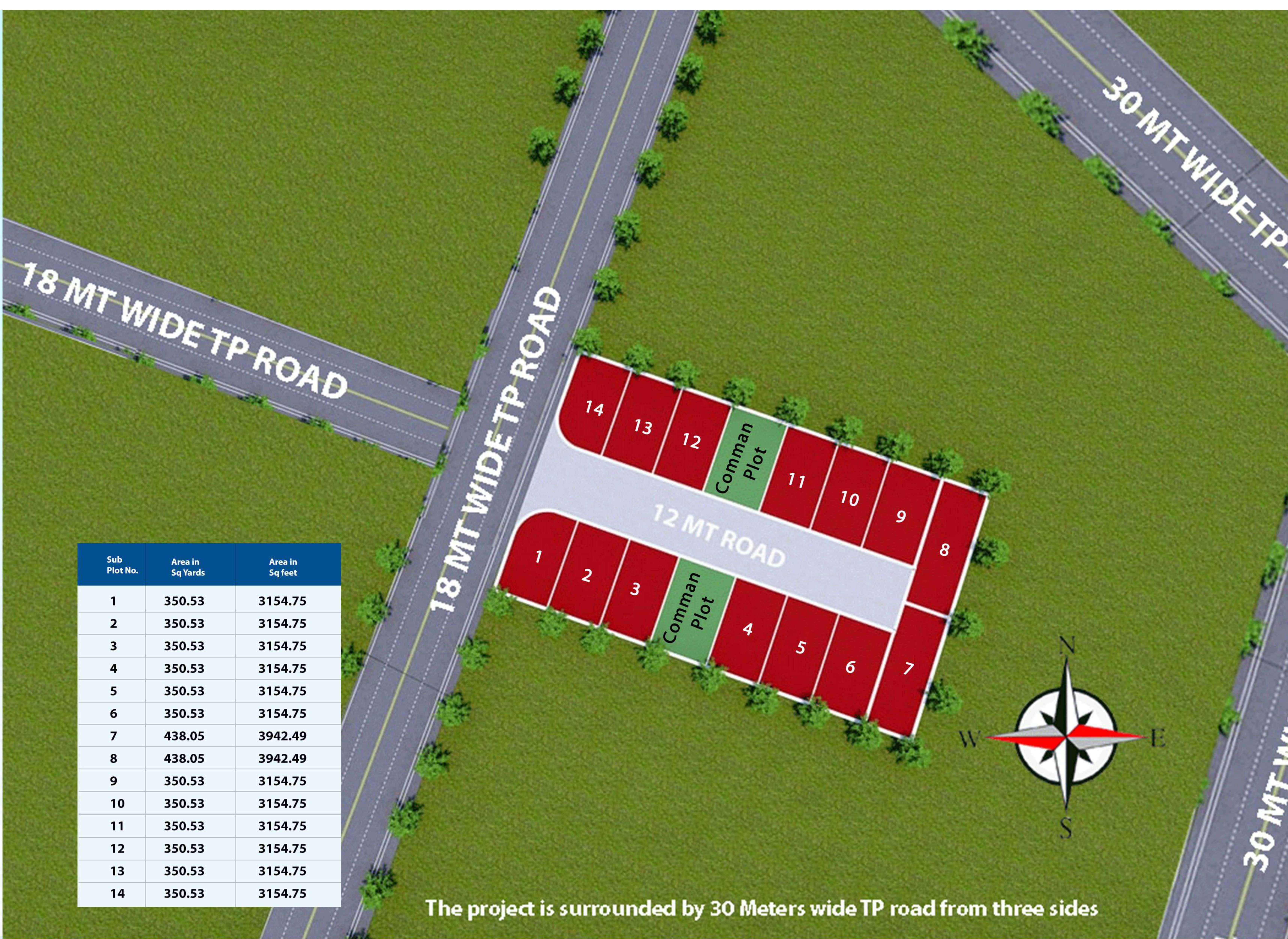


# AMENITIES & FEATURES

- ✓ Gated society with compound wall.
- ✓ Demarcation of Internal Plots and an attractive Entrance Gate.
- ✓ Common plot development like Park and Landscaping.
- ✓ Tree Plantation and Designer Gazebos.
- ✓ Street Lights inside Society.
- ✓ Provision for Water, Light and Drainage facilities.



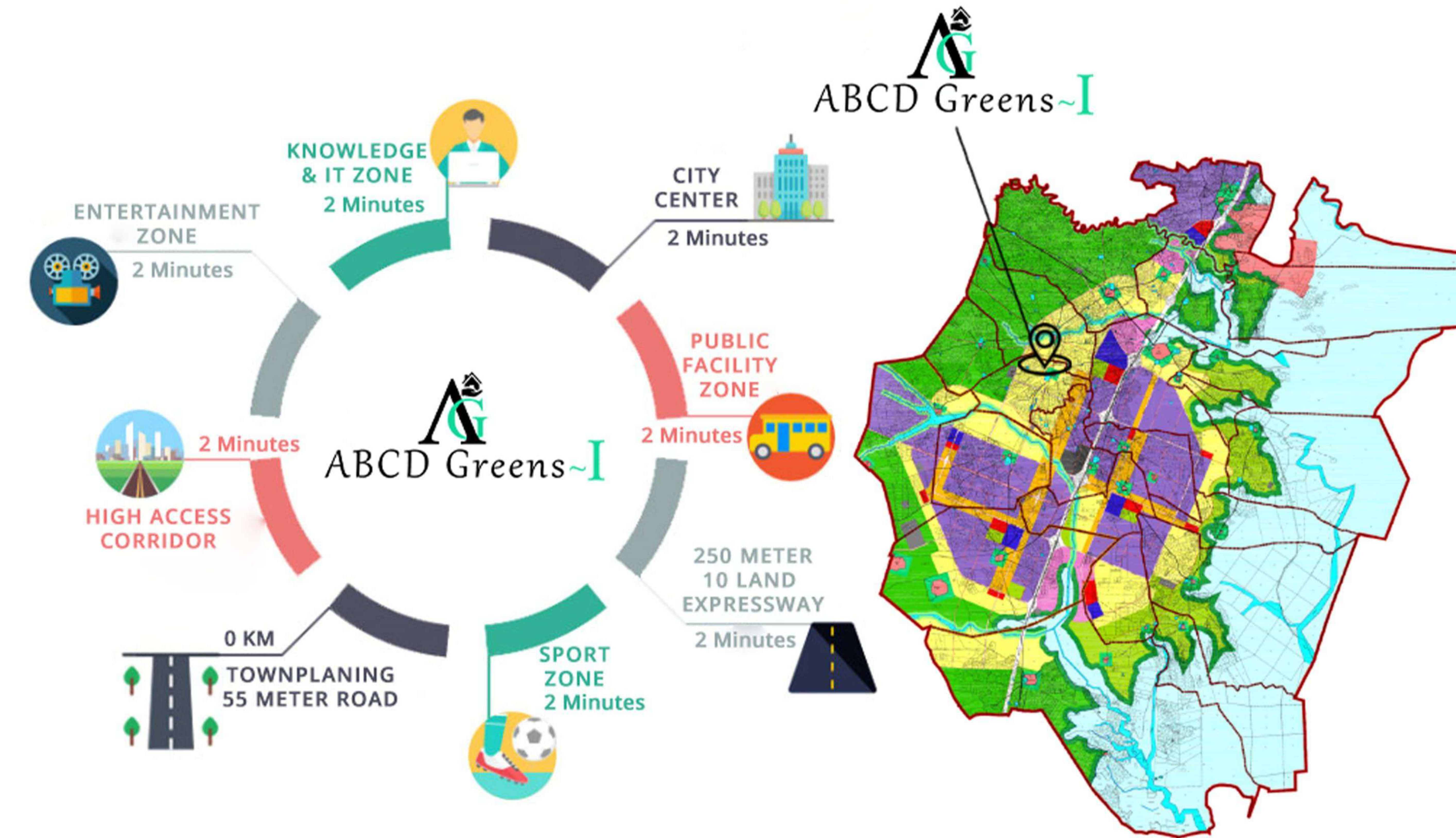
| Sub Plot No. | Area in Sq Yards | Area in Sq feet |
|--------------|------------------|-----------------|
| 1            | 350.53           | 3154.75         |
| 2            | 350.53           | 3154.75         |
| 3            | 350.53           | 3154.75         |
| 4            | 350.53           | 3154.75         |
| 5            | 350.53           | 3154.75         |
| 6            | 350.53           | 3154.75         |
| 7            | 438.05           | 3942.49         |
| 8            | 438.05           | 3942.49         |
| 9            | 350.53           | 3154.75         |
| 10           | 350.53           | 3154.75         |
| 11           | 350.53           | 3154.75         |
| 12           | 350.53           | 3154.75         |
| 13           | 350.53           | 3154.75         |
| 14           | 350.53           | 3154.75         |



\*\*\*\*\*ARTISTIC IMPRESSIONS- indicative in nature and is for general information purpose only.  
\*\* Kindly refer Dholera GDCR for the development Permissions

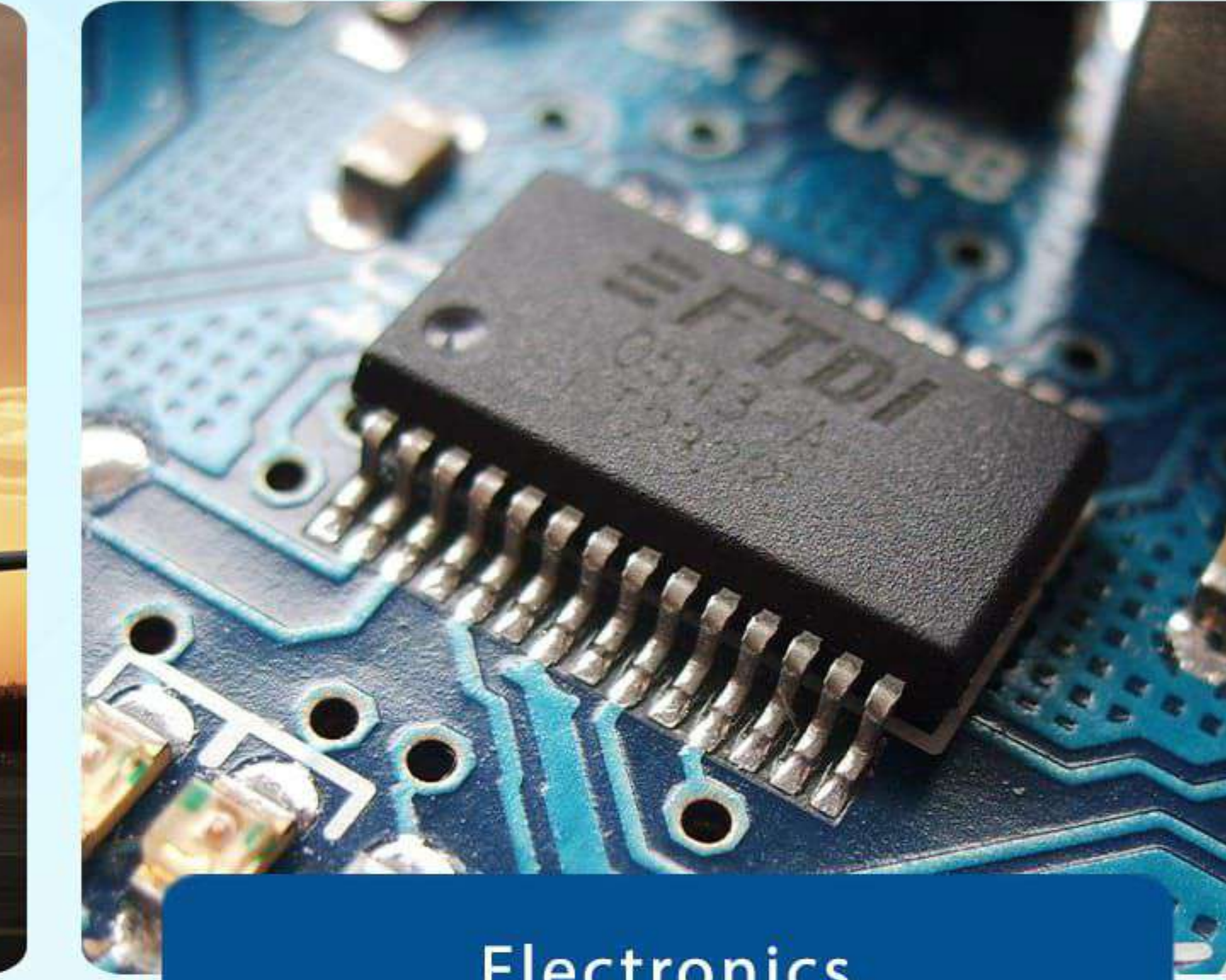
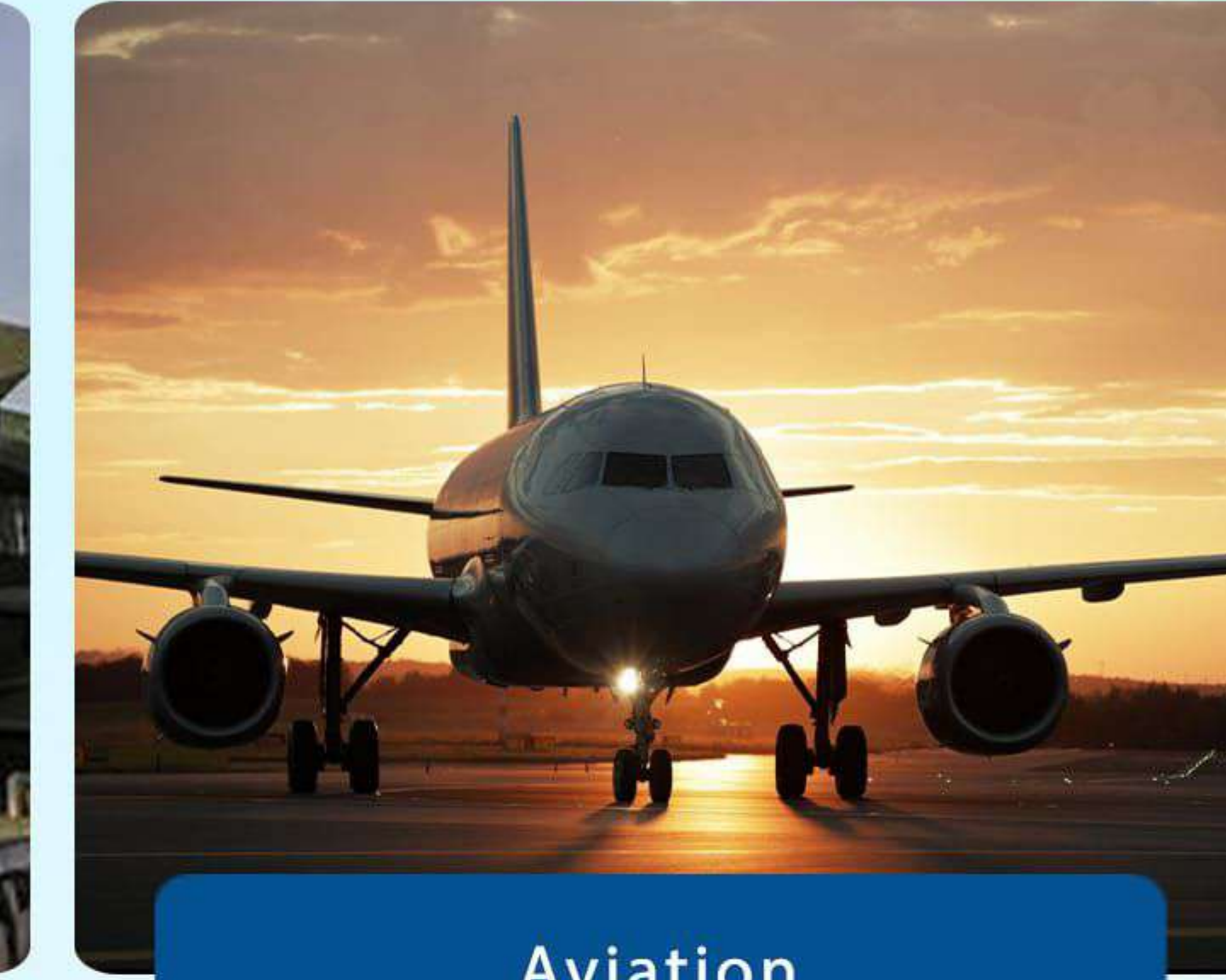


# PROJECT LOCATION INSIDE DHOLERA SIR



TP - 2 WEST DHOLERA SIR | VILLAGE BHADIYAD

Dholera SIR will be home to non-polluting industries promoting a clean, green and sustainable urban development which can contribute to the growth of the region and India. Some of the identified sectors are:



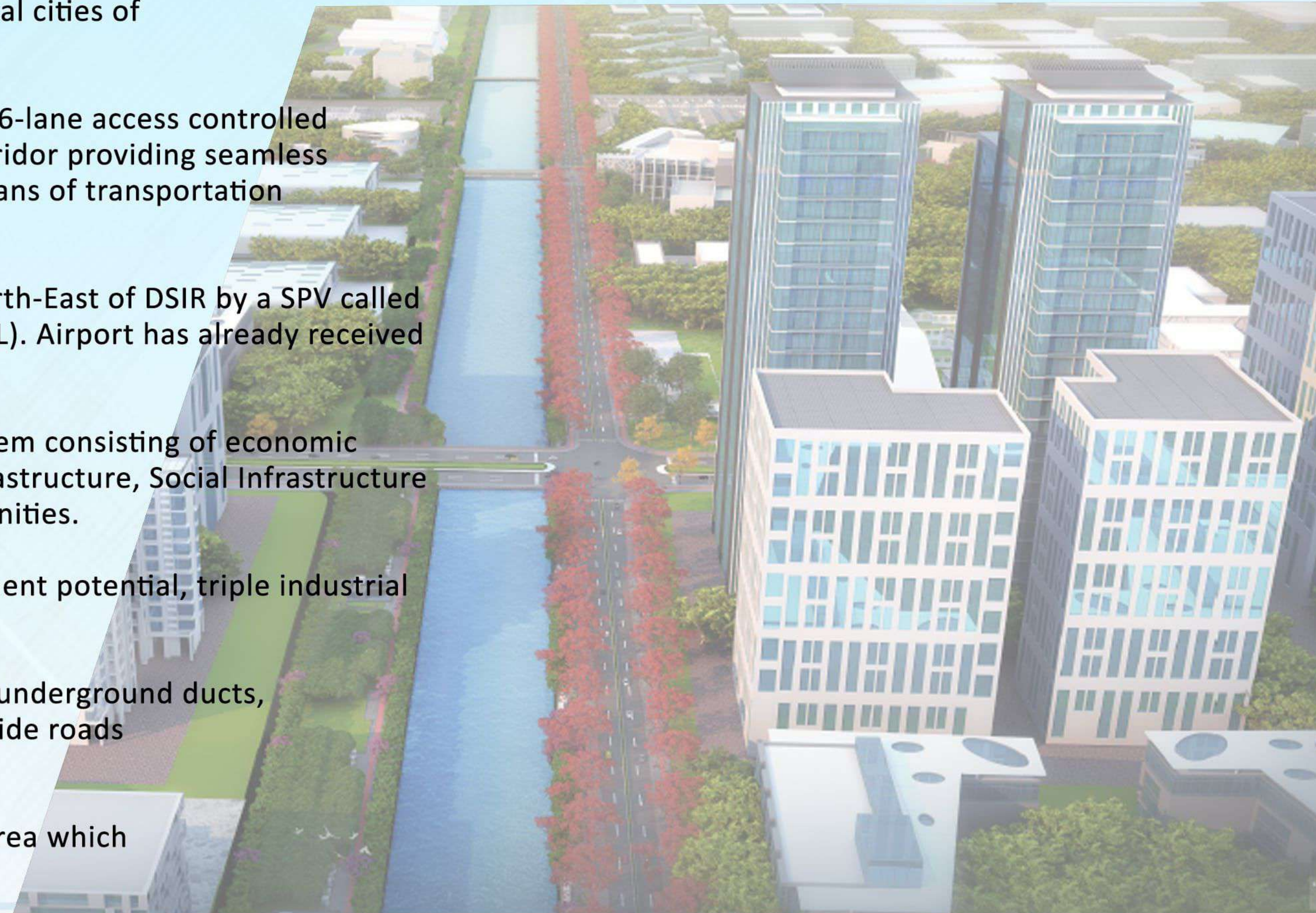
**SMART HOMES**  
Building Smart India



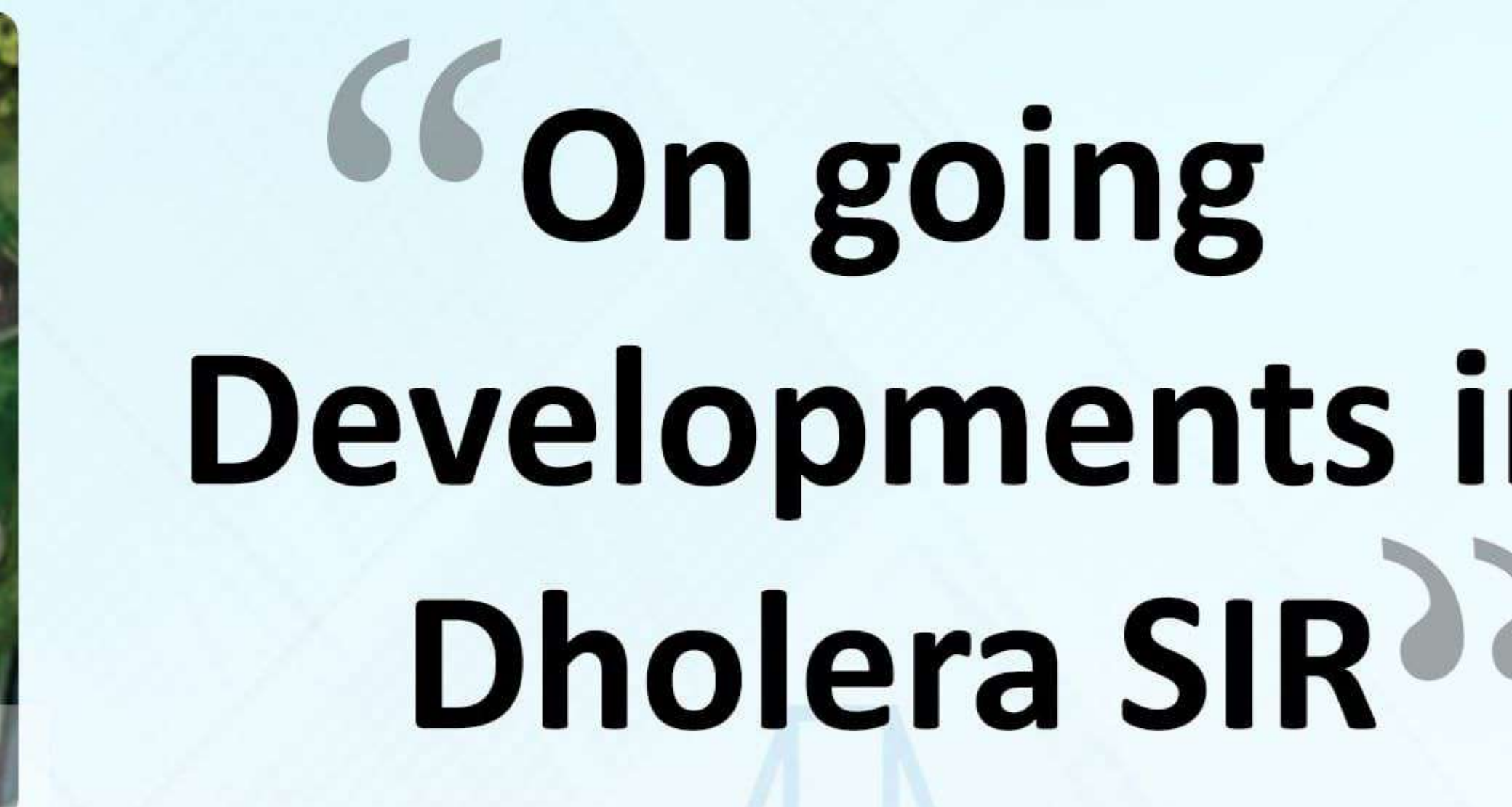
# DHOLERA SIR, “A NEW GUJARAT, WITHIN GUJARAT”

**“Dholera SIR will be developed better than Delhi and six times bigger than Shanghai ”  
Modi Ji said at Vibrant Gujarat Investors Summit**

- ✓ Dholera SIR strategically located between the industrial cities of Ahmedabad, Baroda, Rajkot and Bhavnagar.
- ✓ Dholera City will be connected with Ahmedabad by a 6-lane access controlled expressway & MRTS (Metro Rail) in one common corridor providing seamless connectivity & Rail-Road transition as an effective means of transportation between the 2 cities.
- ✓ An international airport is being developed to the North-East of DSIR by a SPV called Dholera International Airport Company Limited (DIACL). Airport has already received Environmental & Site clearance
- ✓ Dholera City will have its own self-sustaining eco-system consisting of economic drivers through industrialisation, utility & logistic infrastructure, Social Infrastructure including education, healthcare and other public amenities.
- ✓ Project goals of Dholera SIR is to double the employment potential, triple industrial output, and quadruple exports.
- ✓ The smart city of Dholera will get stormwater drains, underground ducts, electricity and water supply, wastewater discharge, wide roads as well as good connectivity.
- ✓ The Dholera smart city will have 11% of open green area which officials say will be the largest in the country.
- ✓ Interestingly, the tap water will be drinkable



**Dholera, Special Investment Region**  
**Total Area: 920 Sq. Km | Developable Area: 567.39 Sq. Km**



**“On going  
Developments in  
Dholera SIR”**

**"DSIR is Planned, Smart & Sustainable Community which will be the role model  
for Future Cities in India"**