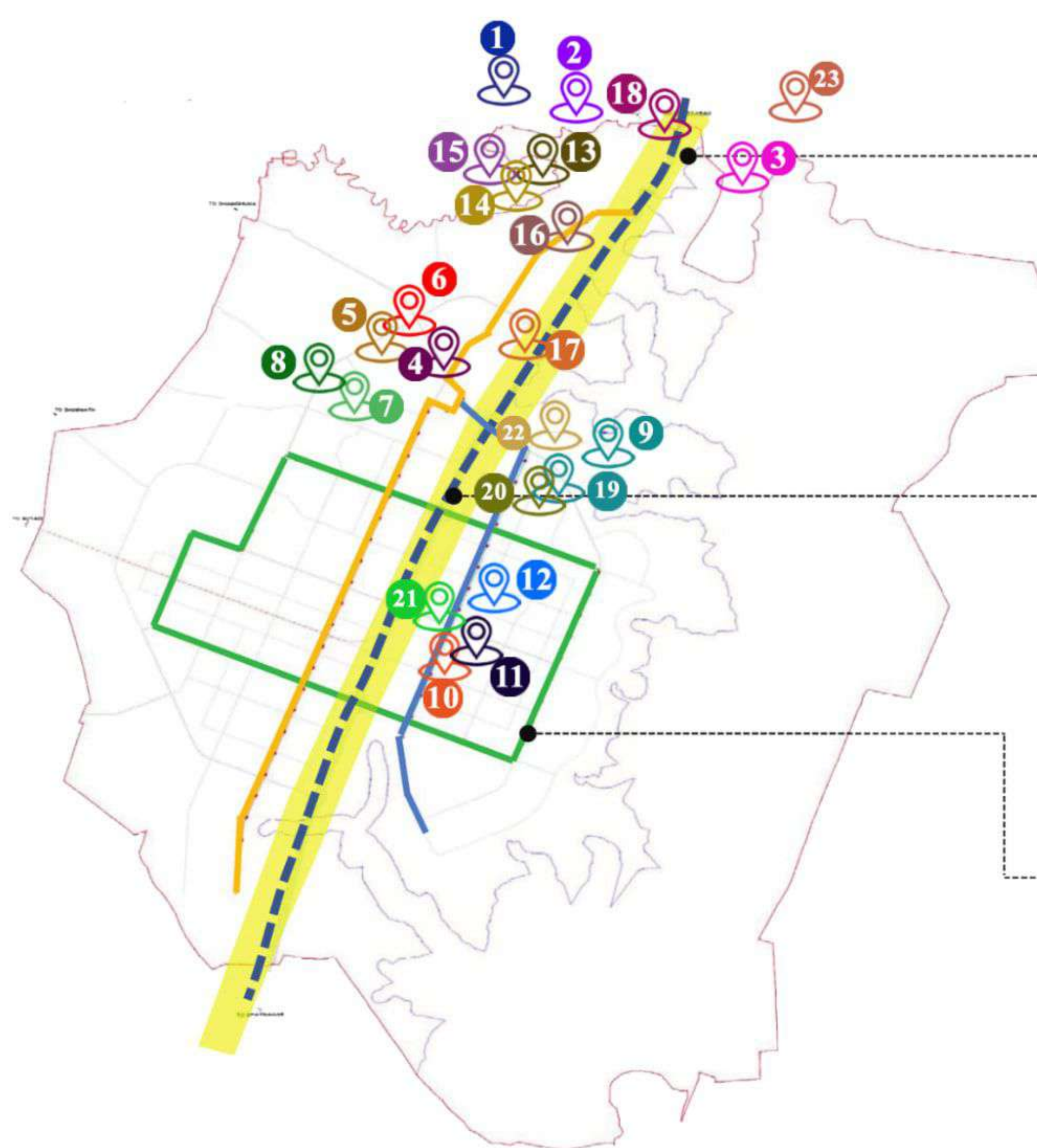


LOCATION OF SMARTHOMES PROJECTS AROUND LIGHT RAIL { METRO } NETWORK DHOLERA

Proposed Light Rail Network {Metro} in Dholera

| SMART HOMES PROJECTS | | |
|----------------------|--|---|
| 1 | | Maple Garden |
| 2 | | Dholera City Square |
| 3 | | International Airport City |
| 4 | | ABCD Enclave I |
| 5 | | ABCD Enclave II |
| 6 | | ABCD Enclave III |
| 7 | | ABCD Greens I |
| 8 | | ABCD Greens II |
| 9 | | Dholera Central Residency I |
| 10 | | Orchard Enclave I |
| 11 | | Orchard Enclave II |
| 12 | | Pinecrest Gardenia |
| 13 | | Orange County |
| 14 | | Olive Garden |
| 15 | | Mulberry Park |
| 16 | | Dholera International Plaza |
| 17 | | Piccadelly Square |
| 18 | | Dholera Xpressway Commercial & industrial Park I |
| 19 | | Dholera Xpressway Commercial & industrial Park II |
| 20 | | Dholera Xpressway Commercial & industrial Park III |
| 21 | | Orchard Enclave 3 |
| 22 | | Bheemtalav - Commercial - park -I |
| 23 | | Navagam Hieghts |



TOWN PLANNING 2 (EAST), RESIDENTIAL ZONE
DHOLERA SIR

A PROJECT BY:
SMARTHOMES INFRASTRUCTURE PVT. LTD.



SmartHomes Infrastructure Pvt. Ltd.

1205 Ganesh Glory, Near BSNL Office, Jagatpur Chenpur Road, SG Highway Jagatpur, Ahmedabad - 382481 Gujarat, India

+91 7096961241 - 50 | www.smart-homes.in | info@smart-homes.in



Dholera Central Residency-I, a project by SmartHomes Infrastructure is in Town Planning 2 (TP 2) east in residential zone of Dholera SIR. Project site is very strategically located in front of Activation Area of Dholera SIR.

Dholera Smart City development will happen in phased manner. The first phase of development will cover Town Planning 1 and Town Planning 2 for which the time line set by Government is year 2022.



QUICK FACTS ABOUT THE PROJECT

Survey No. 160/2 | Village: Bhimtalav | Taluka: Dholera | District: Ahmedabad

Total Area: 16,533 Sq Meters Approx. | Total No. of Sub Plots: 23 | 2 Common Plots | Compound Wall and an entrance Gate

Proper demarcation between plots | Internal Roads | Tree Plantation and Street Lights



LOCATION ADVANTAGE

Dholera Central Residency - I , Inside TP 2, Dholera SIR

- ✓ Project site in front of Activation Area.
- ✓ 2 minutes from 250 Meters wide Dholera Expressway connecting Ahmedabad-Dholera-Bhavnagar..
- ✓ 2 minutes from Dholera City Center and High Access Corridor.
- ✓ 2 minutes from Green Zone.
- ✓ Excellent opportunity for Rental Income
- ✓ Posh Location in Central Dholera.
- ✓ Zero kms from Dholera SIR Central

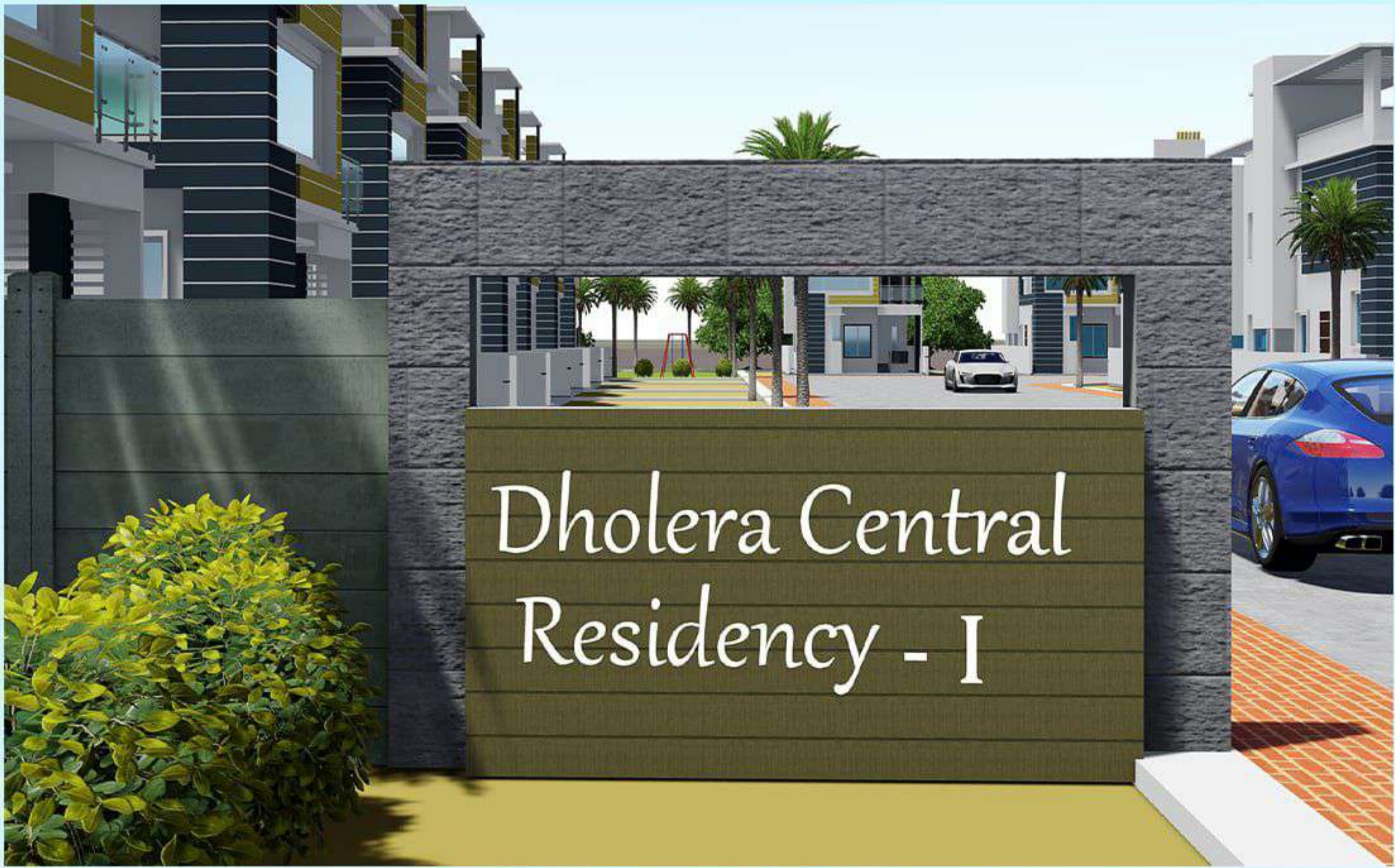
"Three things that matter in property: Location, Location, Location".

Investing in Dholera Central Residency - I means you are getting all the three!!!

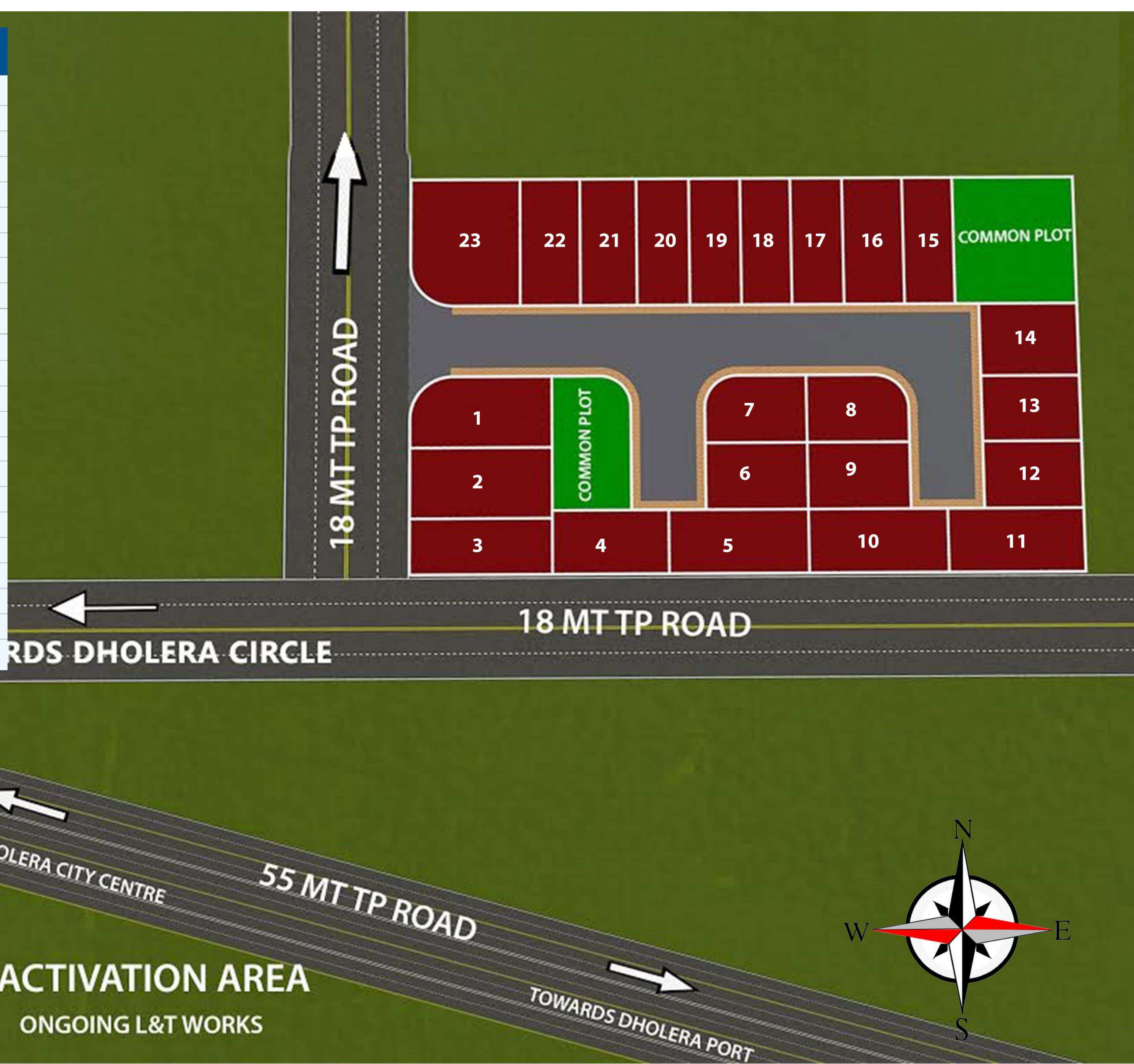


AMENITIES & FEATURES

- ✓ Gated society with compound wall.
- ✓ Demarcation of Internal Plots and an attractive Entrance Gate.
- ✓ Common plot development like Park and Landscaping.
- ✓ Tree Plantation and Designer Gazebos.
- ✓ Street Lights inside Society.
- ✓ Provision for Water, Light and Drainage facilities.



| Sub Plot No. | Area in Sq Yards | Area in Sq feet |
|--------------|------------------|-----------------|
| 1 | 533.87 | 4804.79 |
| 2 | 533.69 | 4803.19 |
| 3 | 533.69 | 4803.19 |
| 4 | 377.88 | 3400.92 |
| 5 | 461.66 | 4154.91 |
| 6 | 370.49 | 3334.40 |
| 7 | 533.62 | 4802.55 |
| 8 | 533.62 | 4802.55 |
| 9 | 370.49 | 3334.40 |
| 10 | 461.66 | 4154.91 |
| 11 | 461.66 | 4154.91 |
| 12 | 357.37 | 3216.32 |
| 13 | 357.37 | 3216.32 |
| 14 | 475.58 | 4280.23 |
| 15 | 373.81 | 3364.29 |
| 16 | 373.81 | 3364.29 |
| 17 | 373.81 | 3364.29 |
| 18 | 373.81 | 3364.29 |
| 19 | 373.81 | 3364.29 |
| 20 | 373.81 | 3364.29 |
| 21 | 373.81 | 3364.29 |
| 22 | 373.81 | 3364.29 |
| 23 | 533.63 | 4802.71 |

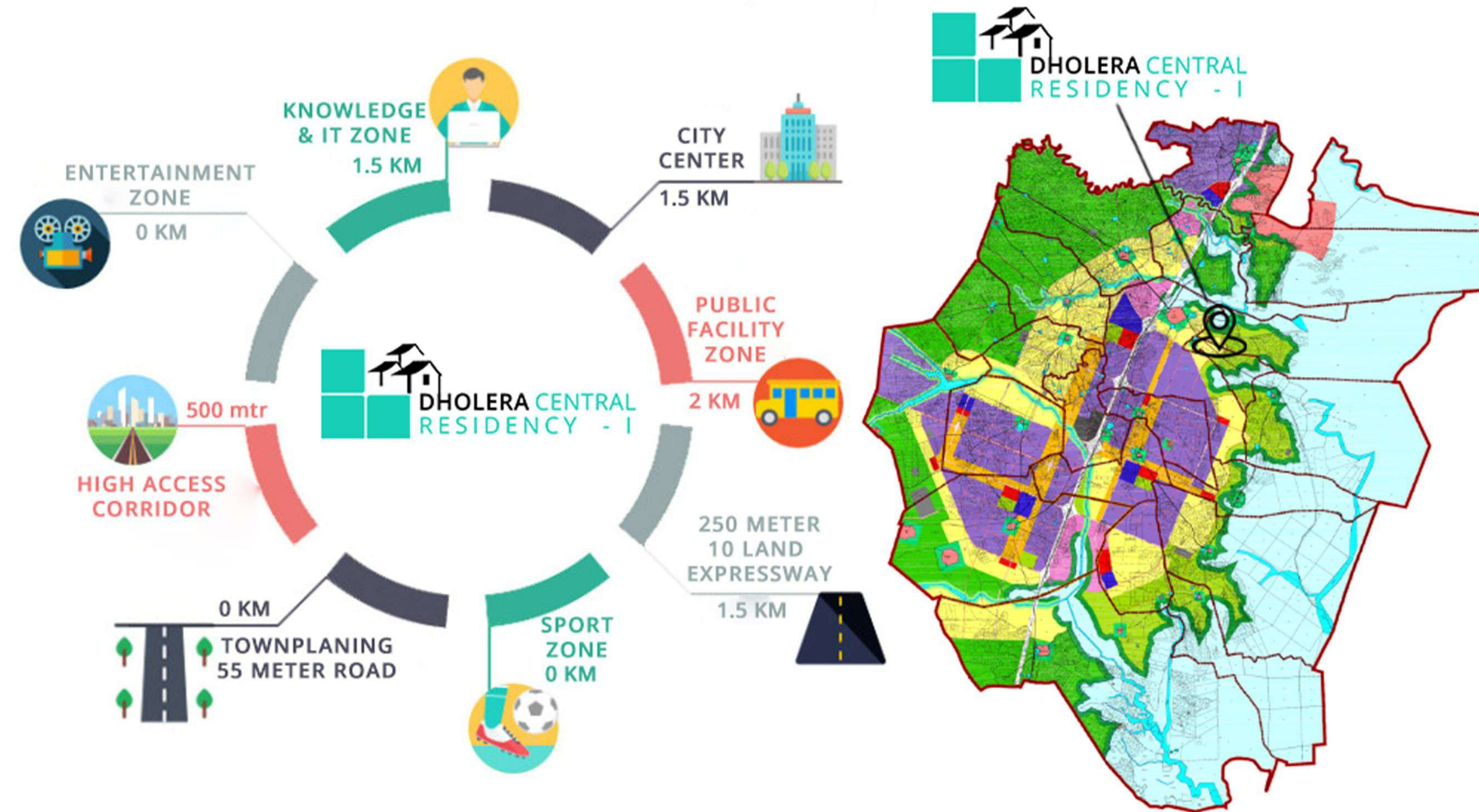


*****ARTISTIC IMPRESSIONS- indicative in nature and is for general information purpose only.

** Kindly refer Dholera GDCR for the development Permissions

PROJECT LOCATION INSIDE DHOLERA SIR

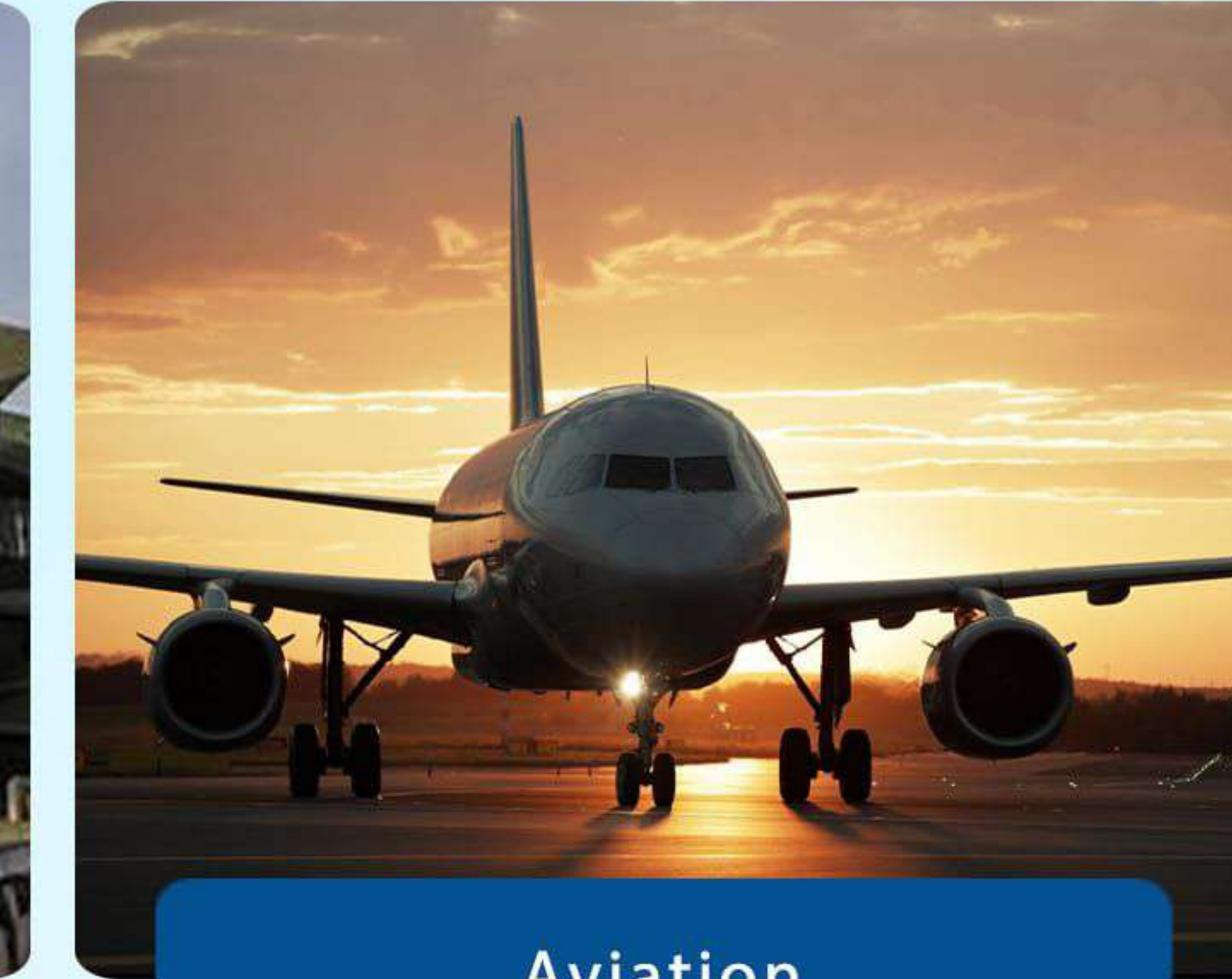
Dholera SIR will be home to non-polluting industries promoting a clean, green and sustainable urban development which can contribute to the growth of the region and India. Some of the identified sectors are:



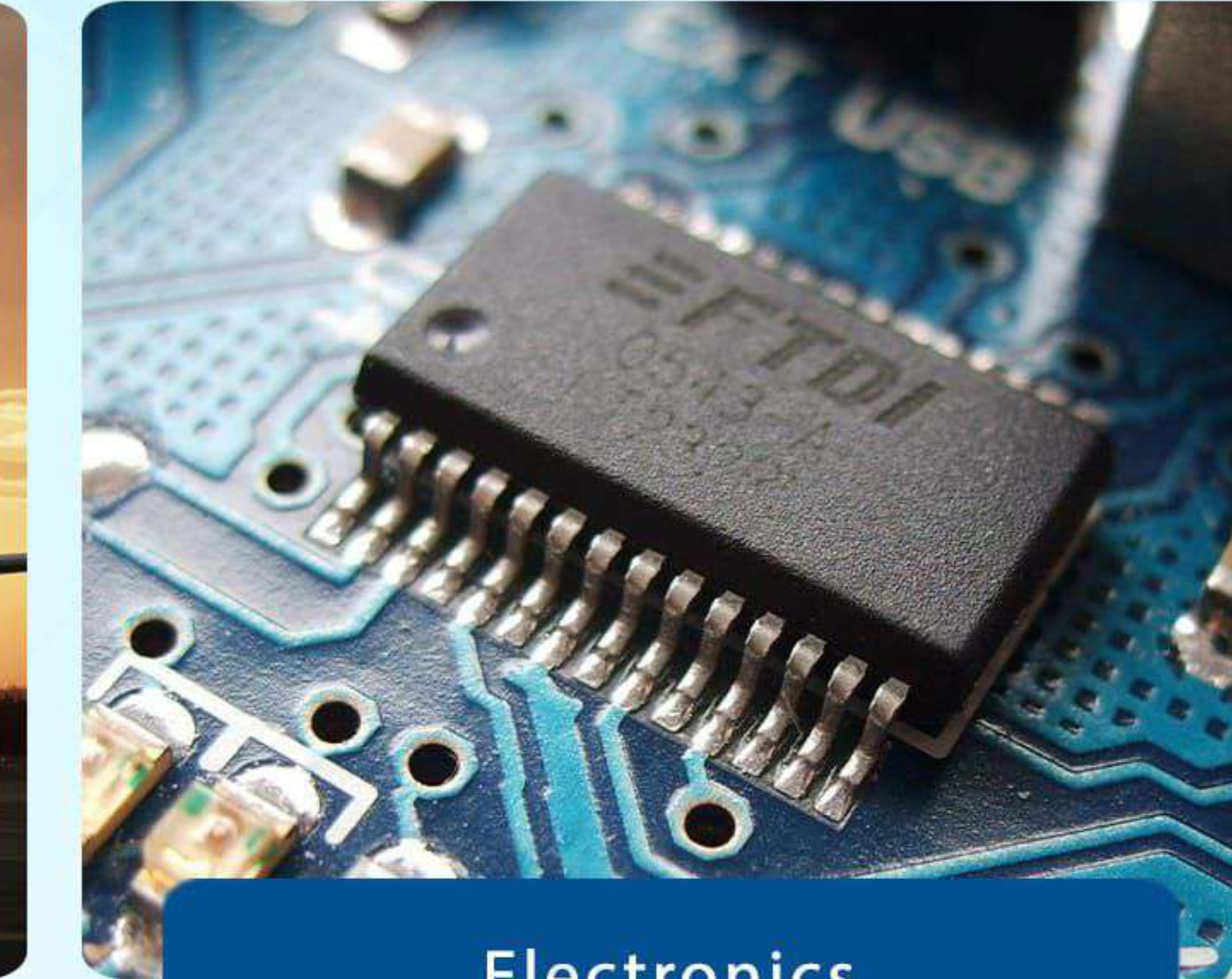
TP - 2 EAST DHOLERA SIR | VILLAGE BHIMTALAV



Defence



Aviation



Electronics



High-tech emerging technologies



Heavy engineering



Pharmaceuticals & Biotechnology



Auto & Auto ancillary



General Manufacturing



Agro & Food processing



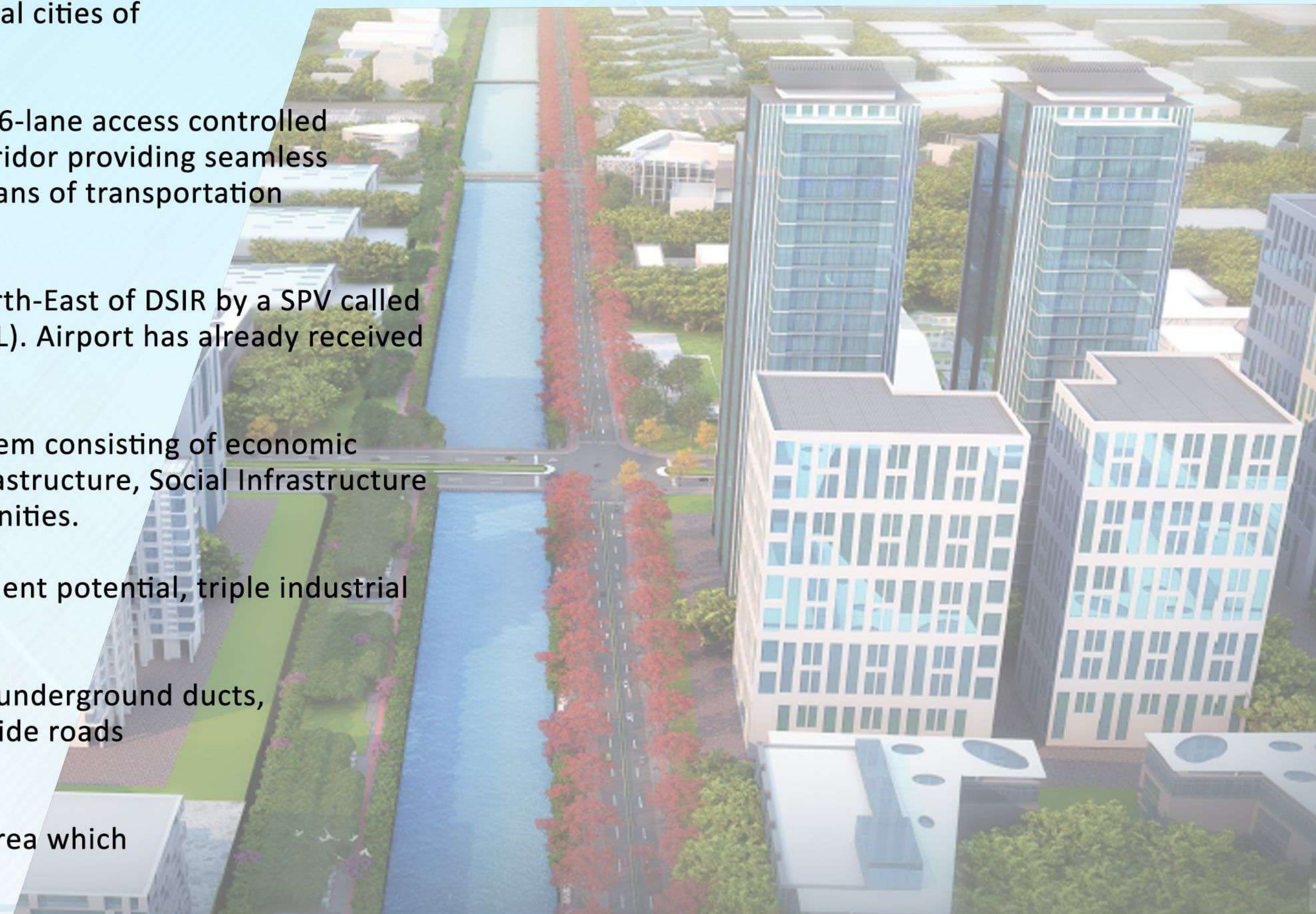
Metals & Metallurgical products


SMART HOMES
Building Smart India

DHOLERA SIR, “A NEW GUJARAT, WITHIN GUJARAT”

**“Dholera SIR will be developed better than Delhi and six times bigger than Shanghai ”
Modi Ji said at Vibrant Gujarat Investors Summit**

- ✓ Dholera SIR strategically located between the industrial cities of Ahmedabad, Baroda, Rajkot and Bhavnagar.
- ✓ Dholera City will be connected with Ahmedabad by a 6-lane access controlled expressway & MRTS (Metro Rail) in one common corridor providing seamless connectivity & Rail-Road transition as an effective means of transportation between the 2 cities.
- ✓ An international airport is being developed to the North-East of DSIR by a SPV called Dholera International Airport Company Limited (DIACL). Airport has already received Environmental & Site clearance
- ✓ Dholera City will have its own self-sustaining eco-system consisting of economic drivers through industrialisation, utility & logistic infrastructure, Social Infrastructure including education, healthcare and other public amenities.
- ✓ Project goals of Dholera SIR is to double the employment potential, triple industrial output, and quadruple exports.
- ✓ The smart city of Dholera will get stormwater drains, underground ducts, electricity and water supply, wastewater discharge, wide roads as well as good connectivity.
- ✓ The Dholera smart city will have 11% of open green area which officials say will be the largest in the country.
- ✓ Interestingly, the tap water will be drinkable



Dholera, Special Investment Region
Total Area: 920 Sq. Km | Developable Area: 567.39 Sq. Km



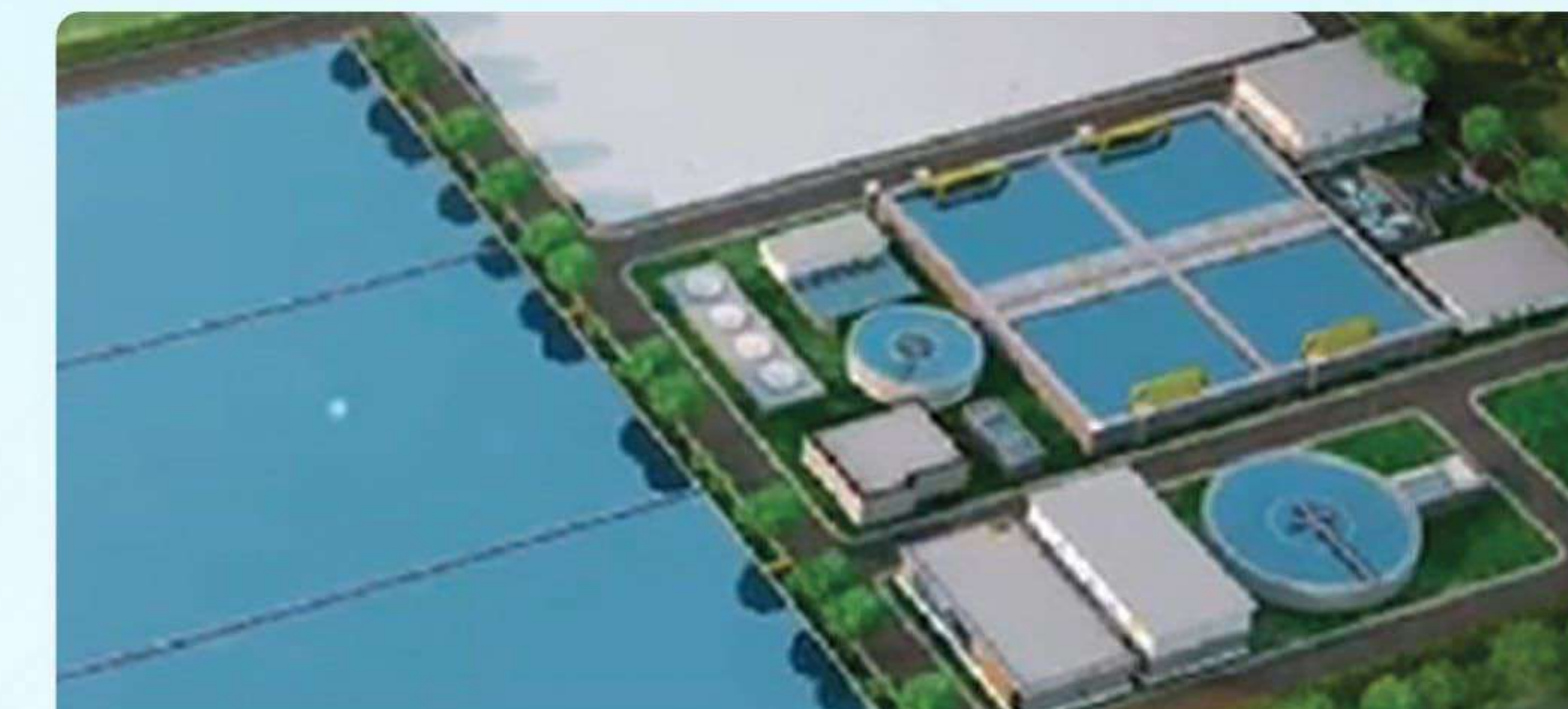
Roads and Services - Tender has been awarded to L&T of INR. 1734 Cr. L&T has mobilised on site & work has already commenced.



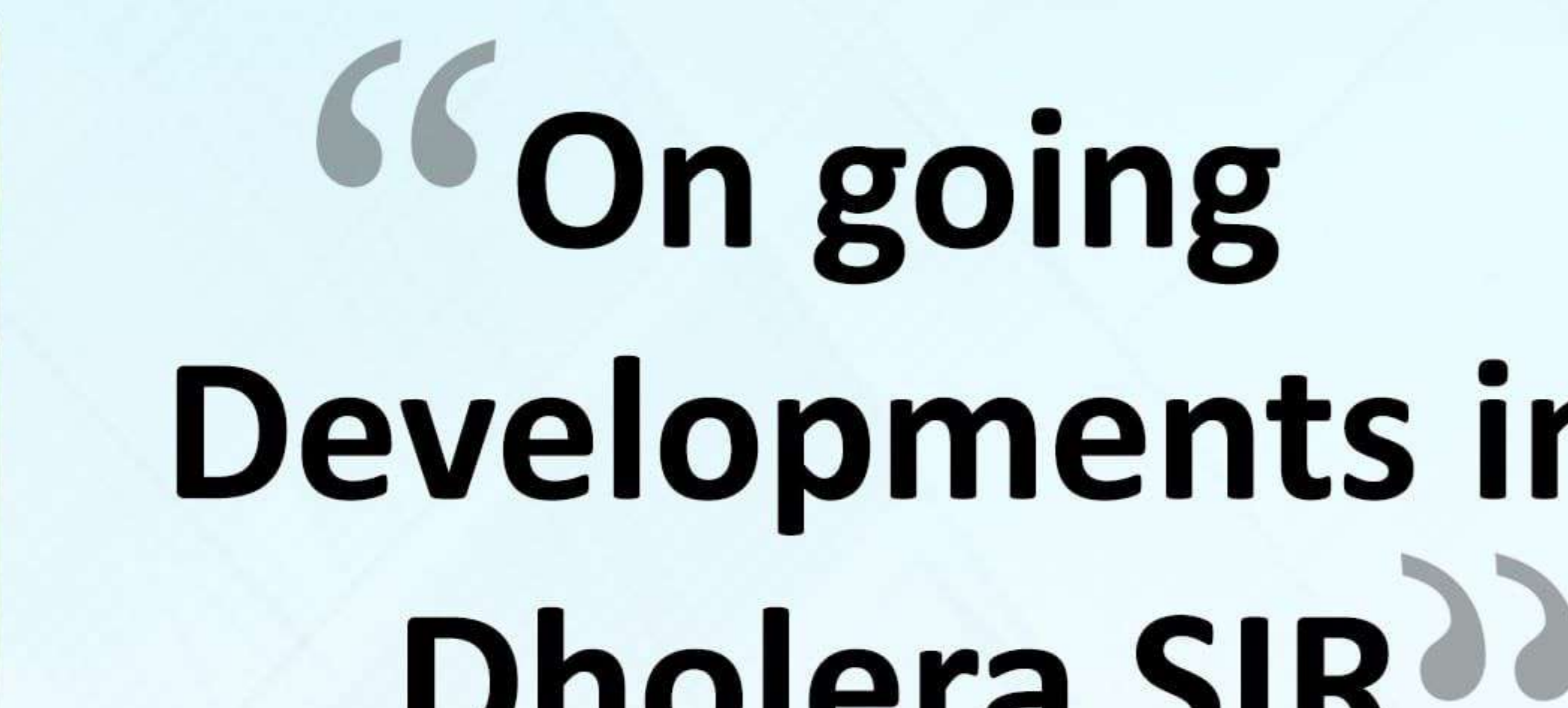
ABCD Building - Tender has been awarded to Cube Construction of INR. 72.31 Cr. Work at site is Completed.



Water Treatment Plant - Tender has been awarded to SPML of INR. 90 Cr. A water treatment plant of 50 MLD will be established.



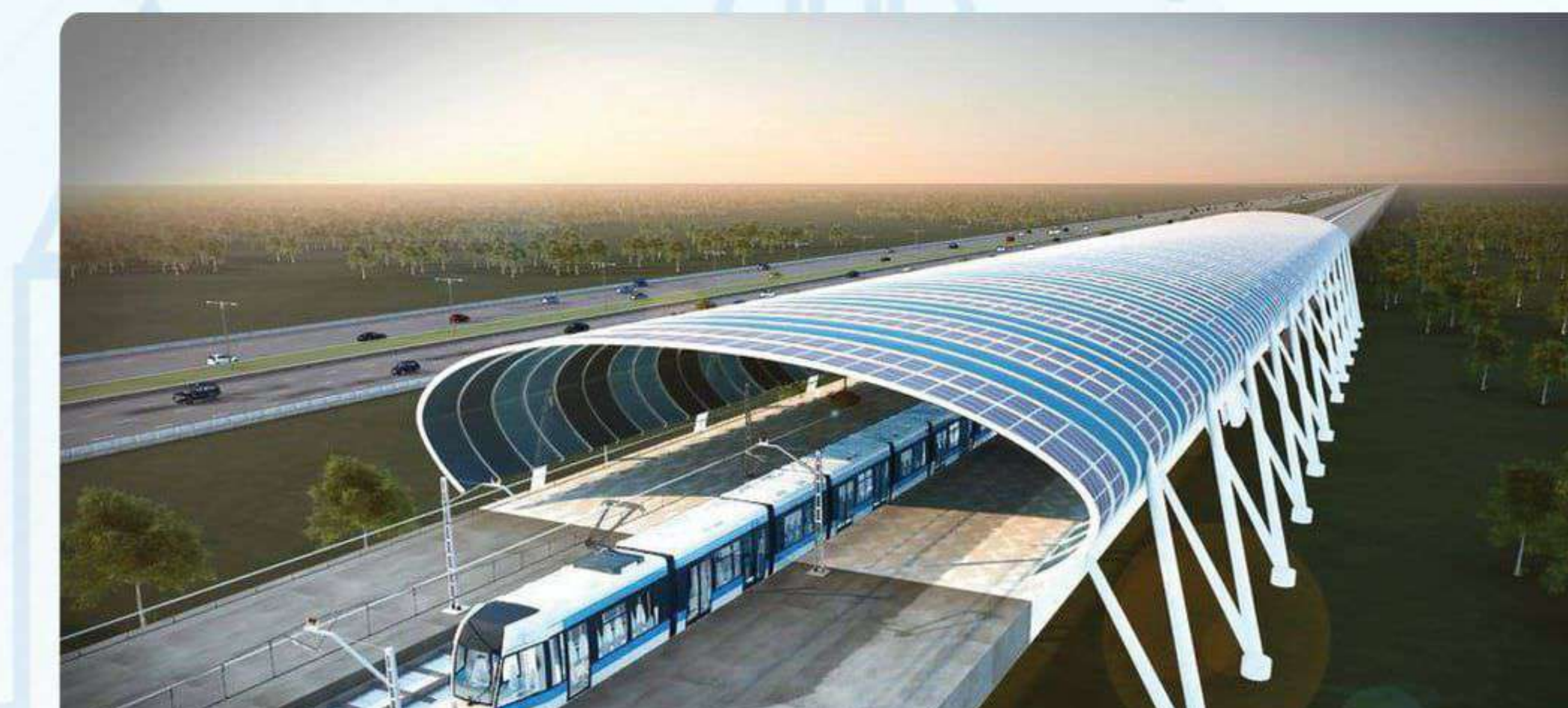
Sewage Treatment Plant - Tender has been Awarded to L&T. L&T will be establishing a Sewage treatment plant of 10 MLD.



250 Meter Expressway of 110 kms connecting Ahmedabad - Dholera - Bhavnagar.



Common Effluent Treatment Plant (CETP) - A CETP is required in Dholera Industrial City - Tender has been floated for the same & bidding is under progress for a 20 MLD CETP.



Dholera Metro Rail Project Cost - Rs. 7,000 Crores. Completion Target 2024.



Dholera International Airport - Area identified for Airport development is 1426 hectares.

**“On going
Developments in
Dholera SIR”**

**"DSIR is Planned, Smart & Sustainable Community which will be the role model
for Future Cities in India"**